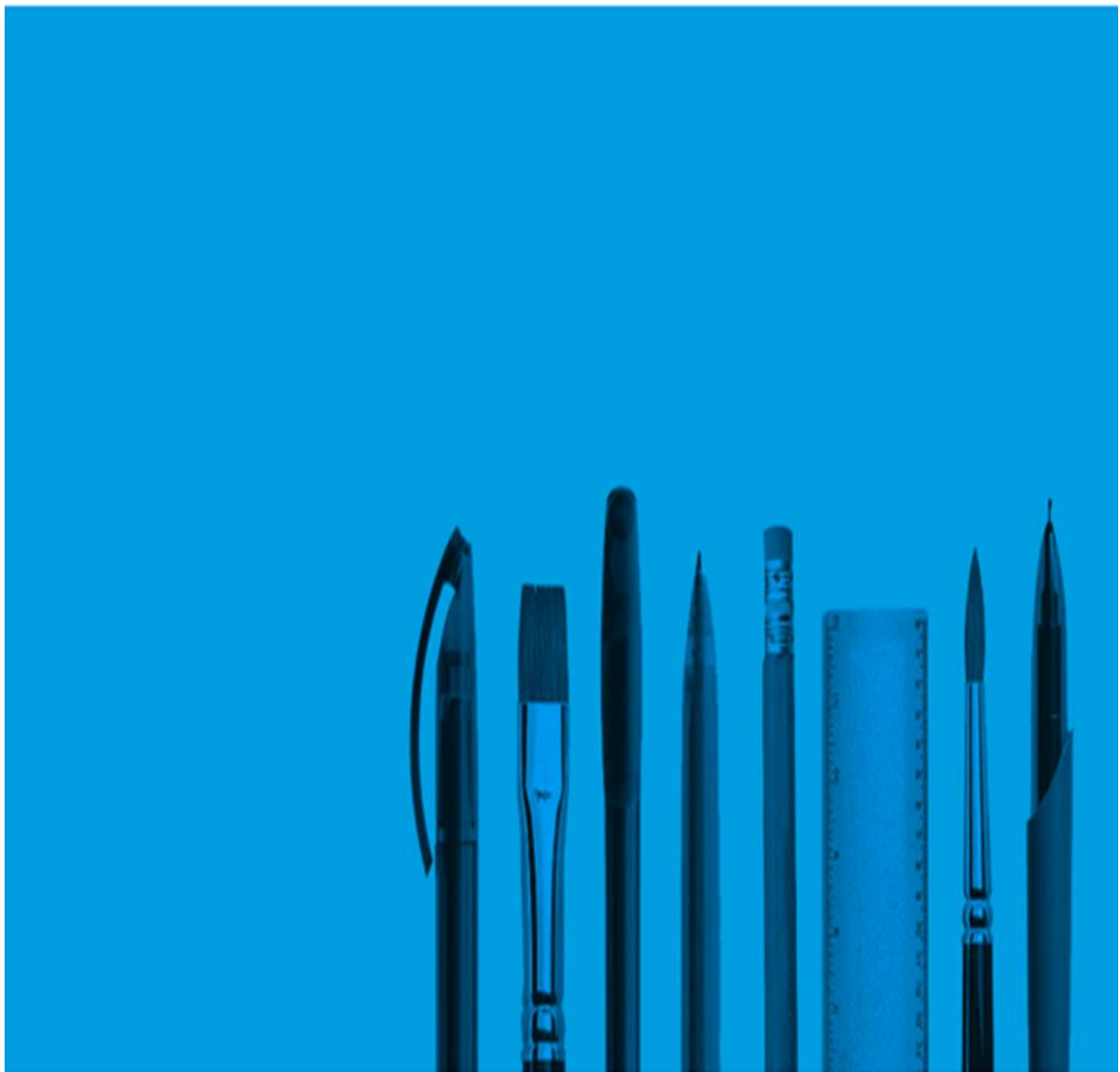


General and Vocational Qualification Fees 2024/25

Effective period: 1 September 2024 to 31 August 2025



1.0 Introduction.....	3
2.0 What do WJEC entry fees include?.....	3
3.0 WJEC Invoicing Policy.....	4
4.0 Supplementary Fees	
4.1 Late, Very Late Entries and Registrations.....	6
4.1a Examination Entry Deadlines.....	7
4.2 Amendments.....	10
4.3 Late Cash-In (Aggregation) Fee.....	11
4.4 Entry Withdrawal.....	12
4.5 Transfer of Candidates.....	12
4.6 Centres with Subjects Requiring Examiner or Moderator Visits.....	13
4.7 Overseas centre administration fees.....	13
5.0 Adaptations & Remote Invigilation.....	14
6.0 Post Results Services.....	15
7.0 General Qualifications	
7.1 WJEC CBAC GCSE – New Specifications.....	16
7.2 WJEC Eduqas GCSE – New Specifications Designated for Wales.....	19
7.3 WJEC Eduqas GCSE – New Specifications.....	20
7.4 WJEC CBAC AS and A Levels – New Specifications.....	22
7.5 WJEC Eduqas AS and A Levels – New Specifications Designated for Wales.....	26
7.6 WJEC Eduqas AS and A Levels – New Specifications.....	27
8.0 Vocational Qualifications	
8.1 WJEC Entry Level Certificate.....	29
8.2 WJEC Entry Pathways.....	30
8.3 WJEC Language Pathways.....	31
8.4 WJEC Cymraeg Gwaith / Work Welsh.....	32
8.5 WJEC Vocational Certificates.....	33
8.6 WJEC Vocational Awards and Certificates.....	34
8.7 WJEC Applied Certificates and Diplomas.....	35
8.8 WJEC Applied Certificates and Extended Certificates.....	36
8.9 WJEC Diploma in Foundation Studies.....	37
8.10 WJEC Extended Project.....	37
8.11 Welsh Baccalaureate.....	38
8.12 Essential Skills Wales / Essential Skills for Work and Life.....	40
8.13 Pathways to Employment.....	41
8.14 Cymraeg i Oedolion / Welsh for Adults.....	42
8.15 Eduqas Technical Awards.....	43
8.16 Sustainability.....	45
8.17 Advanced Manufacturing Technologies - Semiconductors.....	50
9.0 Health & Social Care Wales.....	53

This document summarises the WJEC CBAC and WJEC Eduqas Entry Fees for 2024/25 from 1 September 2024. It should be noted that all Entry and Registration Fees apply from 1st September 2024 and assume that there is no change in what aspects of service are paid for by government.

To assist in reading this document, the Entry Fees for general and vocational qualifications are grouped and listed by subject. Where unit entry is allowable, the unit entry fee is also provided. If the qualification has a double award or short course entry option, the respective double award and short course entry fees are also provided.

2.0 What do WJEC CBAC and Eduqas fees include?

- ✓ Free and unlimited access to digital educational resources for teachers and learners and a range of non-digital support for teachers including access to specifications, SAMs and teacher guides (for qualifications delivered in Wales, this includes bilingual material).
- ✓ Direct access to our team of subject specialists, offering teachers professional subject support.
- ✓ Direct access to our customer support team.
- ✓ Unlimited teacher access to the latest mark schemes, sample assessment materials and past papers.
- ✓ All visiting moderation.
- ✓ All external verification.

This section details the processes followed by WJEC in relation to invoicing centres for Entry Fees.

3.1 Issuing of Invoices

WJEC will issue invoices for each qualification as follows:

- On time entries will be invoiced at the end of the amendment window
- Late fees will be invoiced after the date on which very late fees are applied.
- Very late fees will be invoiced after the closing date for late Cash-Ins

Generally, invoices will be issued within 4 weeks of the above deadlines.

Invoices will be emailed to the centre contact using the confirmed email address held by WJEC's Finance Department.

3.2 Invoice Content

On time invoices will provide a breakdown of fees by qualification/unit, including unit price and quantity. For late and very late fees, the invoice will also provide detail of the candidates.

Each invoice will be allocated a unique invoice number and will provide clear details of the fee being charged,

3.3 Payment Terms

WJEC payment terms are 21 days from the date of the invoice. If full payment is not received by this date, WJEC will instigate its standard credit control processes to collect overdue debts.

3.4 Payment of Invoices

Invoices should be settled by either bank transfer or cheque, and details of these methods of payment are included on each invoice.

3.5 Retention of Invoices

Invoices are retained for the previous complete six financial years plus the current financial year in accordance with legal requirements on the retention of records.

3.6 Contact Details

Should centres require further information in relation to entries, centres should contact WJEC's Entries team on 029 2026 5193 or by e-mail to entries@wjec.co.uk

For information in relation to payment or copy of invoices, centres should contact WJEC's Accounts team on 02920 2026 5198 or by e-mail to accounts@wjec.co.uk

4.1 Late, Very Late Entries and Registrations

Centres must submit their entries (and registrations) in an accurate and timely way, to ensure that WJEC is able to provide correct examination and assessment materials and issue examination results on time. WJEC actively encourages centres to submit their entries on time to avoid incurring additional work and cost at WJEC and subsequent cost to themselves in the form of late fees and to allow sufficient time for centres' own self-review.

Entry Deadlines for all 2024/25 qualifications are detailed in **4.1a**, along with the Amendment Window and dates from which Late Fees and Very Late Fees will apply. The table below provides key information on entry terminology:

Terminology

Entry	Candidate is correctly entered with appropriate personal details, qualification entry code and subject/unit entry code information (and Cash-In code where applicable) and entry complies with the related entry rules. A submission that does not have the appropriate information included and that does not comply with the entry rules is incorrect and will be rejected.
Entry Deadline	The final date that entries can be received and processed by WJEC without incurring additional charges.
Amendment Window	The period when centres can make amendments to entries at no additional cost.
Amendment Date	The date by which all amendments to entries must be submitted, to ensure no additional charges will be applied.
Entry Fee	The Entry Fee indicated for the specific qualification or unit.
Late Fee Date	The date from which all entries and amendments will incur a Late Fee charge. The Late Fee is equivalent to 2 times the Entry Fee for that qualification (or unit).
Very Late Fee Date	The date from which all entries and amendments will incur a Very Late Fee charge. The Very Late Fee is equivalent to 2.5 times the Entry Fee for that qualification (or unit).

Centres should be aware that WJEC may refuse late and very late entries for some qualifications if there is a risk to the integrity and security of the examination or assessment delivery or to the processing of timely results.

4.0 Supplementary Fees (continued)

4.1a Examination Entry Deadlines

QUALIFICATION	SERIES	ENTRY DEADLINE	AMENDMENT DATE	AMENDMENT WINDOW	LATE FEES PAYABLE FROM (LATE DATE)	VERY LATE FEES PAYABLE FROM (VERY LATE DATE)
GCE	May / June 2025	21 February 2025	18 March 2025	19 working days	19 March 2025	19 April 2025
GCSE	November 2024	4 October 2024	16 October 2024	9 working days	17 October 2024	1 November 2024
	January 2025	21 October 2024	11 November 2024	16 working days	12 November 2024	12 December 2024
	May / June 2025	21 February 2025	18 March 2025	19 working days	19 March 2025	19 April 2025
Entry Level	May / June 2025	21 February 2025	18 March 2025	19 working days	19 March 2025	19 April 2025
Welsh Baccalaureate	New Registrations	31 October 2024	30 November 2024	21 working days	1 December 2024	1 February 2025
	January 2025	21 November 2024	9 January 2025	36 working days	10 January 2025	20 January 2025
	June 2025	21 February 2025	15 April 2025	38 working days	16 April 2025	1 May 2025

For details of the last dates for entry please refer to the “entry procedures and coding information” book.

4.0 Supplementary Fees (continued)

4.1a Examination Entry Deadlines (continued)

QUALIFICATION	SERIES	ENTRY DEADLINE	AMENDMENT DATE	AMENDMENT WINDOW	LATE FEES PAYABLE FROM (LATE DATE)	VERY LATE FEES PAYABLE FROM (VERY LATE DATE)
Vocational Awards and Certificates	January 2025	21 October 2024	11 November 2024	16 working days	12 November 2024	12 December 2024
	June 2025	21 February 2025	18 March 2025	19 working days	19 March 2025	19 April 2025
Extended Project	June 2025	21 March 2025	4 April 2025	10 working days	5 April 2025	5 May 2025
Entry Pathways	January 2025	21 October 2024	11 November 2024	16 working days	12 November 2024 to 13 December 2024	VERY LATE ENTRY NOT ACCEPTED*
	June 2025	18 March 2025	5 May 2025	35 working days	N/A	6 May 2025
Certificate in Latin	January 2025	21 October 2024	11 November 2024	16 working days	12 November 2024	12 December 2024
	June 2025	21 February 2025	18 March 2025	19 working days	19 March 2025	19 April 2025
Certificate in Additional Mathematics	June 2025	21 February 2025	18 March 2025	19 working days	19 March 2025	19 April 2025

For details of the last dates for entry please refer to the “entry procedures and coding information” book.

* In exceptional circumstances late entry will be allowed and a late fee payable.

4.0 Supplementary Fees (continued)

4.1a Examination Entry Deadlines (continued)

QUALIFICATION	SERIES	ENTRY DEADLINE	AMENDMENT DATE	AMENDMENT WINDOW	LATE FEES PAYABLE FROM (LATE DATE)	VERY LATE FEES PAYABLE FROM (VERY LATE DATE)
Foundation Diploma in Art and Design	June 2025	21 February 2025	18 March 2025	19 working days	19 March 2025	19 April 2025
Applied Certificates and Diplomas	June 2025	21 February 2025	18 March 2025	19 working days	19 March 2025	19 April 2025
Language Pathways	January 2025	21 October 2024	30 November 2024	29 working days	LATE ENTRY NOT ACCEPTED*	
	June 2025	21 February 2025	30 April 2025	49 working days	LATE ENTRY NOT ACCEPTED*	
Cymraeg Gwaith / Work Welsh	January 2025	21 October 2024	11 November 2024	16 working days	12 November 2024 to 13 December 2024	VERY LATE ENTRY NOT ACCEPTED*
	June 2025	21 February 2025	18 March 2025	19 working days	19 March 2025 to 6 May 2025	VERY LATE ENTRY NOT ACCEPTED*
Health & Social Care & Childcare	See footnote ¹					

For details of the last dates for entry please refer to the “entry procedures and coding information” book.

* In exceptional circumstances late entry will be allowed and a late fee payable.

¹ For Health & Social Care & Childcare qualifications offered by WJEC and City & Guilds, please see the website <https://www.healthandcarelearning.wales/>

4.2 Amendments

Non-chargeable Amendments

- Centres can change the personal details for candidates entered for WJEC qualifications up to the Certificate Printing Deadlines outlined below, at no additional charge.

Certificate Printing Deadlines

Series	Certificate Printing Deadline
November 2024	31 January 2025
January 2025	31 March 2025
June 2025	5 September 2025

Chargeable Amendments

- If a centre submits a qualification or unit change (amendment) related to the following outside the amendment window:
 - Tier**
 - Subject**
 - Option**
- The centre will be charged a fee equivalent to the Late Fee or Very Late Fee (less the standard fee already paid), depending on when the late amendment is made. For example, an amendment made on 24th October to the tier or subject of an entry for a November series GCSE would be deemed a Late Entry and would generate an additional standard entry fee charge. Similarly, if an amendment was made as late as 1st November, this would be deemed a Very Late Entry and would generate an additional amendment fee equivalent to one and half times the standard entry fee.
- If candidate personal details are amended after the Certificate Printing Deadlines (indicated above), a £10 charge will be applied, to reflect the additional time and materials required to issue a revised certificate. Please note that personal details may only be amended via this route up to 12 months after certificate issue. If centres wish to amend personal details after this date, they will need to follow the replacement certificate process outlined on WJEC's public website.

4.3 Late Cash-In (Aggregation) Fee

Where required, centres should include the appropriate Cash-In code for a qualification when submitting their entries to WJEC. If a Cash-In code is subsequently submitted by the Amendment Date, then no additional charge will apply. If the Cash-In code is submitted after the Amendment Date, the following fees will apply:

Late and Very Late Cash-In

Cash-In received after Amendment Date	Late	£10.00
January Series - Cash-In received between publication of results and 13 th April 2025	Very Late	£20.00
Summer Series - Cash-In received between publication of results and 20 th September 2025	Very Late	£20.00

Please note that Cash-In codes need to be applied to some subjects in the following Qualifications:

- GCSE unitised
- A Level unitised
- Entry Pathways
- Applied Certificates and Diplomas
- Vocational Awards and Certificates
- Welsh Baccalaureate
- Cymraeg Gwaith / Work Welsh

4.4 Entry Withdrawal

If centres withdraw a candidate, subject or unit after the amendment date, in most cases the entry fee will not be refunded.

Where centres are waiting on candidate examination results for the January series in order to decide whether those candidates also need to be entered for the summer series examinations, centres must enter **all possible candidates** by the entry deadline for the summer series. Centres can then withdraw candidates, as required, during the amendment window, once January examination results are published early in March: in these circumstances, the entry fee will not be charged.

Where a candidate is unable to sit an examination due to ill health or bereavement and a centre communicates this formally to WJEC within 2 weeks of the examination date (along with an accompanying medical certificate for ill health cases), WJEC may refund the candidate entry fee. Eligibility for refund will be considered on a case by case basis.

In situations where candidates are deceased prior to an examination sitting, the centre should provide a formal letter communicating this to WJEC so that we can respond appropriately in relation to the fee refund and other matters.

All correspondence relating to the above should be sent to:

entries@wjec.co.uk

4.5 Transfer of Candidates

Where a candidate is entered for an examination at one centre and then needs to take the examination at an alternative UK or Non-UK centre*, the following fees will apply:

Transfer fees

Candidates sitting examinations at UK centres	£31.50
Candidates sitting examinations outside of the UK	£63.00

*Please note that the centre must also meet the relevant JCQ requirements for transfer candidates.

4.6 Centres with Subjects Requiring Examiner or Moderator Visits

WJEC arranges travel and accommodation (where necessary) for examiners/moderators to enable the visit to take place. Therefore centres are advised that any requests to change the arranged date within 10 working days of the visit may incur charges that are equivalent to the travel and accommodation costs incurred by the organisation.

4.7 Overseas centre administration fees

Annual administration fee for examination services	£850.00
--	---------

4.8 Future qualifications – teaching from September 2025

WJEC is launching several new qualifications with teaching from September 2025. Indicative fees for these qualifications will be published on the WJEC website in a separate document at a later date.

Please see documents at: <https://www.wjec.co.uk/home/qualifications-in-development/>

5.1 WJEC GCSE resit entries

If a candidate sat adapted WJEC GCSE qualifications in 2022 and wish to resit in 2025 or a future series, please contact GCSE@wjec.co.uk for guidance on options and entry requirements.

5.2 WJEC GCE resit entries

If a candidate was awarded a WJEC AS/A Level grade in 2021 or 2022 and wishes to resit in 2025 or a future series, please contact GCE@wjec.co.uk for guidance on options and entry requirements.

5.3 Remote Invigilation service

Fees listed for qualification entry do not include optional Remote Invigilation services for qualifications where this is available.

Remote Invigilation fee service	£15.00
---------------------------------	--------

6.0 Post Results Services

For details of Post Results Services for November 2024 and January 2025 series, please refer to the documents that will be published on the WJEC website at https://www.wjec.co.uk/home/administration/results-and-grade-boundaries/#tab_1 when applicable.

Summer 2025 fees will be published at a later date.

7.1 WJEC CBAC GCSE – New Specifications

SUBJECT*	NUMBER OF UNITS	UNIT FEE	FULL QUALIFICATION FEE
Applied Science – Double Award (Unitised) Unit 1,2,3,4 Unit 5	5	£18.05 £18.04	£90.24
Applied Science – Single Award (Unitised)	4	£11.28	£45.12
Art and Design (Linear)	-	-	£45.12
Biology (Unitised)	3	£15.04	£45.12
Built Environment (Unitised)	3	£15.04	£45.12
Business Studies (Linear)	-	-	£45.12
Chemistry (Unitised)	3	£15.04	£45.12
Computer Science (Linear)	-	-	£45.12
Design & Technology – Engineering Design (Linear)	-	-	£45.12
Design & Technology – Fashion & Textiles (Linear)	-	-	£45.12
Design & Technology – Product Design (Linear)	-	-	£45.12
Digital Technology (Linear)	-	-	£45.12

*These fees relate to reformed GCSE qualifications regulated by Qualifications Wales.

7.1 WJEC CBAC GCSE – New Specifications (continued)

SUBJECT*	NUMBER OF UNITS	UNIT FEE	FULL QUALIFICATION FEE
Drama (Linear)	-	-	£45.12
English Language (Linear)	-	-	£45.12
English Literature (Unitised)	3	£15.04	£45.12
Food & Nutrition (Linear)	-	-	£45.12
French (Linear)	-	-	£45.12
Geography (Linear)	-	-	£45.12
German (Linear)	-	-	£45.12
Health & Social Care & Childcare (Unitised) – Single Award	2	£22.56	£45.12
Health & Social Care & Childcare (Unitised) – Double Award	4	£22.56	£90.24
History (Unitised)	4	£11.28	£45.12
Mathematics (Linear)	-	-	£45.12
Mathematics – Numeracy (Linear)	-	-	£45.12
Media Studies (Linear)	-	-	£45.12

*These fees relate to reformed GCSE qualifications regulated by Qualifications Wales.

7.1 WJEC CBAC GCSE – New Specifications (continued)

SUBJECT*	NUMBER OF UNITS	UNIT FEE	FULL QUALIFICATION FEE
Music (Linear)	-	-	£45.12
Physical Education – Single Award (Linear)	-	-	£45.12
Physical Education – Short Course (Linear)	-	-	£29.38
Physics (Unitised)	3	£15.04	£45.12
Religious Studies – Single Award (Unitised)			
Unit 1	2	£29.38	£45.12
Unit 2,3		£15.74	
Religious Studies – Short Course (Unitised)	1	£29.38	£29.38
Science - Double Award (Unitised)			
Unit 1,2,3,4,5,6	7	£12.89	£90.24
Unit 7		£12.90	
Spanish (Linear)	-	-	£45.12
Welsh Language (Linear)	-	-	£45.12
Welsh Literature (Unitised)	4	£11.28	£45.12
Welsh Second Language (Unitised)	4	£11.28	£45.12

*These fees relate to reformed GCSE qualifications regulated by Qualifications Wales

7.2 WJEC Eduqas GCSE – New Linear Specifications

Subjects designated for Wales

SUBJECT*	FULL QUALIFICATION FEE
Electronics (Linear)	£45.12
Film Studies (Linear)	£45.12
Geology (Linear)	£45.12
Latin (Linear)	£45.12
Sociology (Linear)	£45.12

*These fees relate to reformed GCSE qualifications regulated by Ofqual and designated by Qualifications Wales.

7.3 WJEC Eduqas GCSE – New Linear Specifications

SUBJECT*	FULL QUALIFICATION FEE
Art & Design	£45.12
Business	£45.12
Computer Science	£45.12
Design & Technology	£45.12
Drama	£45.12
Electronics	£45.12
English Language	£45.12
English Literature	£45.12
Film Studies	£45.12
Food Preparation & Nutrition	£45.12
French ¹	£45.12
Geography Specification A	£45.12
Geography Specification B	£45.12
Geology	£45.12

¹Eduqas GCSE French, German, Spanish qualifications have final sitting in Summer 2025 with a resit only opportunity in 2026.

*These fees relate to reformed GCSE qualifications regulated by Ofqual.

7.3 WJEC Eduqas GCSE – New Linear Specifications (continued)

SUBJECT*	FULL QUALIFICATION FEE
German ¹	£45.12
History	£45.12
Latin	£45.12
Mathematics	£45.12
Media Studies	£45.12
Music	£45.12
Physical Education – Short Course	£29.38
Physical Education – Full Course	£45.12
Religious Studies Route A	£45.12
Religious Studies Route B	£45.12
Religious Studies – Short Course	£29.38
Sociology	£45.12
Spanish ¹	£45.12

¹Eduqas GCSE French, German, Spanish qualifications have final sitting in Summer 2025 with a resit only opportunity in 2026.

*These fees relate to reformed GCSE qualifications regulated by Ofqual.

7.4 WJEC CBAC AS and A Levels – New Specifications

SUBJECT*	NUMBER OF UNITS		AS UNIT FEE 2025	A2 UNIT FEE 2025	FULL A LEVEL 2025
	AS	A2			
Art & Design	1	2	£59.64	£29.82	£119.28
Biology Unit 1, 2 Unit 3, 4, 5	2	3	£29.82	£19.88	£119.28
Built Environment	2	2	£29.82	£29.82	£119.28
Business	2	2	£29.82	£29.82	£119.28
Chemistry Unit 1, 2 Unit 3, 4, 5	2	3	£29.82	£19.88	£119.28
Computer Science Unit 1, 2 Unit 3, 4, 5	2	3	£29.82	£19.88	£119.28
Design & Technology	2	2	£29.82	£29.82	£119.28
Digital Technology	2	2	£29.82	£29.82	£119.28
Drama & Theatre	2	2	£29.82	£29.82	£119.28

*These fees relate to reformed GCE qualifications regulated by Qualifications Wales.

7.4 WJEC CBAC AS and A Levels – New Specifications (continued)

SUBJECT*	NUMBER OF UNITS		AS UNIT FEE 2025	A2 UNIT FEE 2025	FULL A LEVEL 2025
	AS	A2			
Economics	2	2	£29.82	£29.82	£119.28
English Language Unit 1, 2 Unit 3, 4, 5	2	3	£29.82	£19.88	£119.28
English Language & Literature Unit 1, 2 Unit 3, 4, 5	2	3	£29.82	£19.88	£119.28
English Literature Unit 1, 2 Unit 3, 4, 5	2	3	£29.82	£19.88	£119.28
French Unit 1, 2 Unit 3, 4, 5	2	3	£29.82	£19.88	£119.28
Geography Unit 1, 2 Unit 3, 4, 5	2	3	£29.82	£19.88	£119.28
German Unit 1, 2 Unit 3, 4, 5	2	3	£29.82	£19.88	£119.28
Government & Politics	2	2	£29.82	£29.82	£119.28

*These fees relate to reformed GCE qualifications regulated by Qualifications Wales.

7.4 WJEC CBAC AS and A Levels – New Specifications (continued)

SUBJECT*	NUMBER OF UNITS		AS UNIT FEE 2025	A2 UNIT FEE 2025	FULL A LEVEL 2025
	AS	A2			
Health & Social Care, and Childcare	2	2	£29.82	£29.82	£119.28
History Unit 1, 2 Unit 3, 4, 5	2	3	£29.82	£19.88	£119.28
Law	2	2	£29.82	£29.82	£119.28
Mathematics	2	2	£29.82	£29.82	£119.28
Further Mathematics	3	2	£19.88	£29.82	£119.28
Media Studies	2	2	£29.82	£29.82	£119.28
Music	3	3	£19.88	£19.88	£119.28

*These fees relate to reformed GCE qualifications regulated by Qualifications Wales.

7.4 WJEC CBAC AS and A Levels – New Specifications (continued)

SUBJECT*	NUMBER OF UNITS		AS UNIT FEE 2025	A2 UNIT FEE 2025	FULL A LEVEL 2025
	AS	A2			
Physics Unit 1, 2 Unit 3, 4, 5	2	3	£29.82	£19.88	£119.28
Physical Education	2	2	£29.82	£29.82	£119.28
Psychology	2	2	£29.82	£29.82	£119.28
Religious Studies Unit 1, 2 Unit 3, 4, 5, 6	2	3	£29.82	£19.88	£119.28
Sociology	2	2	£29.82	£29.82	£119.28
Spanish Unit 1, 2 Unit 3, 4, 5	2	3	£29.82	£19.88	£119.28
Welsh	3	3	£19.88	£19.88	£119.28
Welsh Second Language	3	3	£19.88	£19.88	£119.28

*These fees relate to reformed GCE qualifications regulated by Qualifications Wales.

7.5 WJEC Eduqas AS and A Levels – New Specifications designated for Wales

SUBJECT*	AS FEE	A LEVEL FEE
Electronics	£65.69	£119.28
Film Studies	£65.69	£119.28
Geology	£65.69	£119.28

*These fees relate to reformed GCSE qualifications regulated by Ofqual and designated by Qualifications Wales.

7.6 WJEC Eduqas AS and A Levels – New Specifications

SUBJECT*	SUMMER 2025	
	AS FEE	A LEVEL FEE
Art & Design	£65.69	£119.28
Biology	£65.69	£119.28
Business	£65.69	£119.28
Chemistry	£65.69	£119.28
Computer Science	£65.69	£119.28
Design & Technology	£65.69	£119.28
Drama & Theatre	£71.99	£119.28
Economics	£65.69	£119.28
Electronics	£65.69	£119.28
English Language	£65.69	£119.28
English Language & Literature	£65.69	£119.28
English Literature	£65.69	£119.28
Film Studies	£65.69	£119.28
French	£65.69	£119.28

*These fees relate to reformed GCE qualifications regulated by Ofqual.

7.6 WJEC Eduqas AS and A Levels – New Specifications (continued)

SUBJECT*	SUMMER 2025	
	AS FEE	A LEVEL FEE
Geography	£65.69	£119.28
Geology	£65.69	£119.28
German	£65.69	£119.28
Law	£65.69	£119.28
Media Studies	£65.69	£119.28
Music	£71.99	£119.28
Physical Education	£71.99	£119.28
Physics	£65.69	£119.28
Psychology	£65.69	£119.28
Religious Studies	£65.69	£119.28
Sociology	£65.69	£119.28
Spanish	£65.69	£119.28

*These fees relate to reformed GCE qualifications regulated by Ofqual.

8.1 WJEC Entry Level Certificate

SUBJECT	UNIT FEE	QUALIFICATION FEE
English	-	£29.87
Science	-	£29.87
Mathematics – Numeracy	-	£29.87
Welsh	-	£29.87

Pathways QCF

8.2 WJEC Entry Pathways

SUBJECT	UNIT FEE
Additional English	£6.24
Creative, Media & Performance Arts	£6.24
Healthy Living & Fitness	£6.24
Humanities	£6.24
ICT Users	£6.24
Independent Living	£6.24
Mathematics	£6.24
Personal & Social Development	£6.24
Personal Progress	£6.24
Preparing for Work	£6.24
Science Today	£6.24
Welsh	£6.24
Welsh Second Language	£6.24

Pathways

8.3 WJEC Language Pathways

SUBJECT	UNIT FEE	QUALIFICATION FEE
Cornish (all levels)	-	£6.24
French (all levels)	-	£6.24
German (all levels)	-	£6.24
Italian (all levels)	-	£6.24
Japanese (all levels)	-	£6.24
Mandarin (all levels)	-	£6.24
Spanish (all levels)	-	£6.24

Pathways

8.4 WJEC Pathways Cymraeg Gwaith / Work Welsh

SUBJECT	UNIT FEE	QUALIFICATION FEE
Cymraeg Gwaith / Work Welsh	£20.10	£60.30

Other Qualifications

8.5 WJEC Vocational Certificates

SUBJECT	NUMBER OF UNITS	UNIT FEE	FULL QUALIFICATION FEE
Additional Mathematics (Linear)	-	-	£40.20
Latin Language	2	£20.10	£40.20
Latin Language & Roman Civilisation	2	£20.10	£40.20

8.6 WJEC Vocational Awards and Certificates

SUBJECT	NUMBER OF UNITS		UNIT FEE	FULL QUALIFICATION FEE	
	AWARD	CERTIFICATE		AWARD	CERTIFICATE
Constructing the Built Environment	3	-	£20.10	£60.30	-
Events Operations	3	-	£20.10	£60.30	-
Global Business Communication – French (2022 specification)	4	-	£20.10	£80.40	-
Global Business Communication – German (2022 specification)	4	-	£20.10	£80.40	-
Global Business Communication – Spanish (2022 specification)	4	-	£20.10	£80.40	-
Tourism	3	-	£20.10	£60.30	-

¹This qualification is not available for Northern Ireland or maintained centres in Wales.

8.7 WJEC Applied Certificates and Diplomas

SUBJECT	NUMBER OF UNITS			UNIT FEE	FULL QUALIFICATION FEE		
	CERTIFICATE		DIPLOMA		CERTIFICATE		DIPLOMA
Business ²	2		4	£18.57	£37.14		£74.28
Criminology	2		4	£18.57	£37.14		£74.28
Food Science & Nutrition	2		4	£18.57	£37.14		£74.28
Health & Social Care ¹	2		4	£18.57	£37.14		£74.28
Medical Science	3		6	£12.38	£37.14		£74.28
Professional Construction Practice ²	-		4	£18.57	-		£74.28
Tourism ²	2		4	£18.57	£37.14		£74.28

¹This qualification is not available to maintained centres in Wales.

²This qualification has been withdrawn and will award for the final time in Summer 2025.

8.8 WJEC Applied Certificates and Extended Certificates

SUBJECT	NUMBER OF UNITS			UNIT FEE	FULL QUALIFICATION FEE		
	CERTIFICATE	EXTENDED CERTIFICATE			CERTIFICATE	EXTENDED CERTIFICATE	
Business (2023 specification) ¹	2	4		£18.57	£37.14	£74.28	
Sport (2023 specification) ¹	2	4		£18.57	£37.14	£74.28	
Tourism (2023 specification) ¹	3	6		£12.38	£37.14	£74.28	

¹This qualification is not available to maintained centres in England and Northern Ireland

8.9 WJEC Diploma in Foundation Studies

SUBJECT	QUALIFICATION FEE
Foundation Diploma in Art & Design	£150.77

8.10 WJEC Extended Project

SUBJECT	QUALIFICATION FEE
Extended Project Level 3	£45.48

8.11 Welsh Baccalaureate

SUBJECT	FEE
Welsh Baccalaureate KS4 Foundation / National – Registration Fee (per candidate)	£26.89
Welsh Baccalaureate KS4 Foundation / National challenges	£6.24
Welsh Baccalaureate KS4 Foundation / National individual project	£12.48
Welsh Baccalaureate KS4 Foundation / National cash-in fee	£6.24
Welsh Baccalaureate Advanced challenges ¹	£11.46
Welsh Baccalaureate Advanced individual project ¹	£22.91
Welsh Baccalaureate Advanced cash-in fee ¹	£11.46

Welsh Baccalaureate entry fees will remain at the standard fee for that qualification regardless of the adapted assessment arrangements in place. Where applicable, a portion of the full qualification fee will be charged on qualification cash-in.

¹New registrations on Welsh Baccalaureate Advanced not permitted. Resit only opportunity Summer 2025.

8.11 Welsh Baccalaureate (continued)

SUBJECT	FEE
Advanced Skills Baccalaureate Wales (Level 3) – Global Community Project	£24.56
Advanced Skills Baccalaureate Wales (Level 3) – Future Destinations Project	£24.56
Advanced Skills Baccalaureate Wales (Level 3) – Individual Project	£31.02

8.12 Essential Skills Wales / Essential Skills for Work and Life

SUBJECT	UNIT FEE	QUALIFICATION FEE
Essential Application of Number Skills* (Entry 1-3, Level 1-3)	-	£9.95
Essential Communication Skills* (Entry 1-3, Level 1-3)	-	£9.95
Essential Digital Literacy Skills (Entry 1-3, Level 1-3)	-	£9.95
Essential Employability Skills (Entry 3, Level 1-3)	-	£9.95
Essential Skills for Work and Life	£6.24	-

Fees listed for qualification entry do not include optional Remote Invigilation services for qualifications where this is available.

*Fee includes one resit opportunity of the on-line Confirmatory Test

8.13 Pathways to Employment

SUBJECT	AWARD FEE	CERTIFICATE FEE
Entry Level Award/Certificate in Securing Employment (Entry 3)	£31.50	£63.00
Level 1 Award/Certificate in Securing Employment	£31.50	£63.00
Entry Level Award/Certificate in Self Development and Wellbeing (Entry 3)	£31.50	£63.00
Level 1 Award/Certificate in Self Development and Wellbeing	£31.50	£63.00
Entry Level Award/Certificate in Preparing for Employment (Entry 3)	£31.50	£63.00
Level 1 Award/Certificate in Preparing for Employment	£31.50	£63.00

8.14 Cymraeg i Oedolion / Welsh for Adults

SUBJECT	SPEAKING TEST ONLY	COMPLETION FEE	FULL QUALIFICATION FEE
Mynediad / Entry	£14.70	£6.30	£21.00
Sylfaen / Foundation	£16.70	£6.30	£23.00
Canolradd / Intermediate	£18.70	£6.30	£25.00
Uwch / Advanced	£25.60	£8.40	£34.00

8.15 Eduqas Technical Awards

SUBJECT	NUMBER OF UNITS	UNIT FEE	FULL QUALIFICATION FEE
Construction and the Built Environment			
Introduction to the built environment	2	£26.18	£65.46
Designing the built environment		£39.28	
Constructing the built environment		£39.28	
Engineering			
Manufacturing engineering products	3	£19.64	£65.46
Designing engineering products		£19.64	
Solving engineering problems		£26.18	
Health and Social Care			
Health, well-being and development throughout the lifespan	2	£26.18	£65.46
Outcome-focused and person centred practice in health and social care		£39.28	
Hospitality and Catering			
The hospitality and catering industry	2	£26.18	£65.46
Hospitality and catering in action		£39.28	

8.15 Eduqas Technical Awards (continued)

SUBJECT	NUMBER OF UNITS	UNIT FEE	FULL QUALIFICATION FEE
ICT			
ICT in society	2	£26.18	£65.46
ICT in context		£39.28	
Performing Arts			
Performing	3	£19.64	£65.46
Creating		£19.64	
Performing arts in practice		£26.18	
Retail Business			
The business of retail	3	£26.18	£65.46
Customer service for retail business		£19.64	
Merchandising and marketing retail products		£19.64	
Sport and Coaching Principles			
Fitness for sport	3	£26.18	£65.46
Improving sporting performance		£19.64	
Coaching principles		£19.64	

8.16 Sustainability

SUBJECT	FULL FEE	REDUCTION FOR PREVIOUS ACHIEVEMENT	NET FEE
Entry Level Award in Sustainability in Action – Entry 2	£31.50	N/A	£31.50
Entry Level Award in Sustainability in Action – Entry 3	£31.50	N/A	£31.50
Level 1 Award in Sustainability in Action	£31.50	N/A	£31.50
Level 2 Award in Sustainability in Action	£31.50	N/A	£31.50
Entry Level Award in Sustainability in Context – Entry 2			
No previous qualification achievement	£43.98	N/A	£43.98
Previous qualification achieved – Entry Level Award in Sustainability in Action – Entry 2		£31.50	£12.48
Entry Level Award in Sustainability in Context – Entry 3			
No previous qualification achievement	£43.98	N/A	£43.98
Previous qualification achieved – Entry Level Award in Sustainability in Action – Entry 3		£31.50	£12.48
Level 1 Award in Sustainability in Context			
No previous qualification achievement	£43.98	N/A	£43.98
Previous qualification achieved – Level 1 Award in Sustainability in Action		£31.50	£12.48
Level 2 Award in Sustainability in Context			
No previous qualification achievement	£43.98	N/A	£43.98
Previous qualification achieved – Level 2 Award in Sustainability in Action		£31.50	£12.48

8.16 Sustainability (continued)

SUBJECT	FULL FEE	REDUCTION FOR PREVIOUS ACHIEVEMENT	NET FEE
Entry Level Certificate in Sustainability in Context – Entry 2			
No previous qualification achievement		N/A	£63.00
Previous qualification achieved – Entry Level Award in Sustainability in Action – Entry 2	£63.00	£31.50	£31.50
Previous qualification achieved – Entry Level Award in Sustainability in Context – Entry 2		£43.98	£19.02
Entry Level Certificate in Sustainability in Context – Entry 3			
No previous qualification achievement		N/A	£63.00
Previous qualification achieved – Entry Level Award in Sustainability in Action – Entry 3	£63.00	£31.50	£31.50
Previous qualification achieved – Entry Level Award in Sustainability in Context – Entry 3		£43.98	£19.02
Level 1 Certificate in Sustainability in Context			
No previous qualification achievement		N/A	£63.00
Previous qualification achieved – Level 1 Award in Sustainability in Action	£63.00	£31.50	£31.50
Previous qualification achieved – Level 1 Award in Sustainability in Context		£43.98	£19.02
Level 2 Certificate in Sustainability in Context			
No previous qualification achievement		N/A	£63.00
Previous qualification achieved – Level 2 Award in Sustainability in Action	£63.00	£31.50	£31.50
Previous qualification achieved – Level 2 Award in Sustainability in Context		£43.98	£19.02

8.16 Sustainability (continued)

SUBJECT	FULL FEE	REDUCTION FOR PREVIOUS ACHIEVEMENT	NET FEE
Entry Level Extended Certificate in Sustainability in Context – Entry 2			
No previous qualification achievement		N/A	£94.50
Previous qualification achieved – Entry Level Award in Sustainability in Action – Entry 2	£94.50	£31.50	£63.00
Previous qualification achieved – Entry Level Award in Sustainability in Context – Entry 2		£43.98	£50.52
Previous qualification achieved – Entry Level Certificate in Sustainability in Context – Entry 2		£63.00	£31.50
Entry Level Extended Certificate in Sustainability in Context – Entry 3			
No previous qualification achievement		N/A	£94.50
Previous qualification achieved – Entry Level Award in Sustainability in Action – Entry 3	£94.50	£31.50	£63.00
Previous qualification achieved – Entry Level Award in Sustainability in Context – Entry 3		£43.98	£50.52
Previous qualification achieved – Entry Level Certificate in Sustainability in Context – Entry 3		£63.00	£31.50
Level 1 Extended Certificate in Sustainability in Context			
No previous qualification achievement		N/A	£94.50
Previous qualification achieved – Level 1 Award in Sustainability in Action	£94.50	£31.50	£63.00
Previous qualification achieved – Level 1 Award in Sustainability in Context		£43.98	£50.52
Previous qualification achieved – Level 1 Certificate in Sustainability in Context		£63.00	£31.50
Level 2 Extended Certificate in Sustainability in Context			
No previous qualification achievement		N/A	£94.50
Previous qualification achieved – Level 2 Award in Sustainability in Action	£94.50	£31.50	£63.00
Previous qualification achieved – Level 2 Award in Sustainability in Context		£43.98	£50.52
Previous qualification achieved – Level 2 Certificate in Sustainability in Context		£63.00	£31.50
Level 2 Sustainability in Practice – Future Changemakers¹			
No previous qualification achievement	£63.00	N/A	£63.00
Previous qualification achieved – Sustainability in Action – all levels		£31.50	£31.50

¹Available from January 2025.

8.16 Sustainability (continued)

ENDORSED UNIT	ENDORSED UNIT FEE*
Climate Change – Defining Climate Change and its Causes	£12.48
Climate Change – The Impacts of Climate Change	£12.48
Climate Change – Inequalities in the Impacts of Climate Change	£12.48
Climate Change – Managing the Impacts of Climate Change	£12.48
Residential – Homes for People and Wildlife	£12.48
Residential – Sustainability in the Home	£12.48
Residential – Energy in the Home	£12.48
Residential – Living by the Ocean	£12.48

*Completion of an endorsed unit does not count as previous qualification achievement for qualifications listed on previous pages.

8.16 Sustainability (continued)

ENDORSED UNIT	ENDORSED UNIT FEE*
Industry and Business – Carbon and its Impact on Sustainability	£12.48
Industry and Business – Green Careers and the World of Work	£12.48
Industry and Business – Technology for Sustainable Futures	£12.48
Industry and Business – Sustainable Procurement and Fairtrade	£12.48
Waste, the Circular Economy & Transport – Waste Management	£12.48
Waste, the Circular Economy & Transport – Circular Economy	£12.48
Waste, the Circular Economy & Transport – The 3 Rs	£12.48
Waste, the Circular Economy & Transport – Sustainable Transport	£12.48

*Completion of an endorsed unit does not count as previous qualification achievement for qualifications listed on previous pages.

8.17 Advanced Manufacturing Technologies - Semiconductors

SUBJECT	FULL FEE	REDUCTION FOR PREVIOUS ACHIEVEMENT	NET FEE
Level 2 Award in Introduction to advanced manufacturing (semiconductors)	£31.50	N/A	£31.50
Level 2 Certificate in Introduction to advanced manufacturing (semiconductors) No previous qualification achievement	£63.00	N/A	£63.00
Previous qualification achieved – Level 2 Award in Introduction to advanced manufacturing (semiconductors)		£31.50	£31.50
Level 2 Extended certificate in Introduction to advanced manufacturing (semiconductors) No previous qualification achievement	£94.50	N/A	£94.50
Previous qualification achieved – Level 2 Certificate in Introduction to advanced manufacturing (semiconductors)		£63.00	£31.50
Previous qualification achieved – Level 2 Award in Introduction to advanced manufacturing (semiconductors)		£31.50	£63.00
Level 2 Diploma in Introduction to advanced manufacturing (semiconductors) No previous qualification achievement	£126.00	N/A	£126.00
Previous qualification achieved – Level 2 Extended certificate in Introduction to advanced manufacturing (semiconductors)		£94.50	£31.50
Previous qualification achieved – Level 2 Certificate in Introduction to advanced manufacturing (semiconductors)		£63.00	£63.00
Previous qualification achieved – Level 2 Award in Introduction to advanced manufacturing (semiconductors)		£31.50	£94.50

8.17 Advanced Manufacturing Technologies - Semiconductors (continued)

ENDORSED UNIT	ENDORSED UNIT FEE*
The semiconductor industry	£12.48
Careers in the semiconductor industry	£12.48
Understanding semiconductor circuitry	£12.48
Understanding semiconductor manufacturing	£12.48
Working in a cleanroom environment	£12.48
Understanding quality control in the semiconductor industry	£12.48

*Completion of an endorsed unit does not count as previous qualification achievement for qualifications listed on the previous page

8.17 Advanced Manufacturing Technologies – Semiconductors (continued)

SUBJECT	QUALIFICATION FEE*
Level 4 Higher technical qualification for semiconductor technicians	£259.00

*Entry prior to 31 December 2024 will be free of charge.

9.0 Health & Social Care Wales

9.1 Health & Social Care Wales – Qualifications enterable through WJEC in 2024/25

SUBJECT*	UNIT FEE	QUALIFICATION FEE
GCSE Health & Social Care, & Childcare – Single Award	£22.56	£45.12
GCSE Health & Social Care, & Childcare – Double Award	£22.56	£90.24
Level 2 Health & Social Care: Principles & Contexts	£30.00	£60.00
Level 2 Children’s Care, Play, Learning & Development: Core ¹	-	£104.00
Level 2 Children’s Care, Play, Learning & Development: Practice & Theory		
Supporting core practice in Children’s Care, PLD	£102.00	£131.00
Understanding Children’s Care, PLD	£29.00	
Other units	-	

Fees listed for qualification entry do not include optional Remote Invigilation services for qualifications where this is available.

*For further information, please see the website <https://www.healthandcarelearning.wales/>

¹Resit fee for Level 2 Children’s Care, Play, Learning & Development: Core is £52.00

9.0 Health & Social Care Wales (continued)

9.1 Health & Social Care Wales – Qualifications enterable through WJEC in 2024/25

SUBJECT*	UNIT FEE	QUALIFICATION FEE
Level 3 Children’s Care, Play, Learning & Development: Practice & Theory – current specification ¹		
Promoting core practice in CCPLD	£141.76	£216.00
Principles & theories that influence CCPLD in the 21 st century in Wales	£29.40	
Investigating current issues in CCPLD in Wales	£44.84	
Other units	-	
Level 3 Children’s Care, Play, Learning & Development: Practice & Theory – award from Summer 2025 ²		
Promoting core practice in CCPLD	£141.76	£273.00
Principles & theories that influence CCPLD in the 21 st century in Wales	£29.40	
Investigating current issues in CCPLD in Wales	£44.84	
Practical Skills for Work Placement in Early Years (0-7 years) ³	£57.00	
Other units	-	
Level 3 Certificate in Health & Social Care: Principles and Contexts		
Non-examination assessments - Unit 1,3	£22.75	£91.00
External examination assessment - Unit 2	£45.50	
Level 3 Foundation Diploma in Health & Social Care: Principles and Contexts		
Non-examination assessments - Unit 1,3,4,6	£22.75	£136.50
Non-examination assessment - Unit 5	£45.50	
External examination assessment - Unit 2	£45.50	

*For further information, please see the website <https://www.healthandcarelearning.wales/>

¹ Learners who started their course in September 2022 and are due to complete (certificate) prior to Summer 2025 must follow this specification.

² Learners who start their course in September 2023 and are due to complete (certificate) in Summer 2025 must follow this specification.

³ No entry in this unit permitted until Summer 2025.

9.0 Health & Social Care Wales (continued)

9.1 Health & Social Care Wales – Qualifications enterable through WJEC in 2024/25

SUBJECT*	UNIT FEE	QUALIFICATION FEE
Level 3 Diploma in Health & Social Care: Principles and Contexts		
Non-examination assessments - Unit 1,3,4,6	£22.75	£182.00
Non-examination assessment - Unit 5	£45.50	
External examination assessment - Unit 2	£45.50	
Level 3 Extended Diploma in Health & Social Care: Principles and Contexts		
Non-examination assessments - Unit 1,3,4,6,8,9	£22.75	£273.00
Non-examination assessment - Unit 5	£45.50	
External examination assessment - Unit 2,7	£45.50	
Advanced Subsidiary GCE in Health & Social Care & Childcare	£29.82	£59.64
Advanced GCE in Health & Social Care & Childcare	£29.82	£119.28

*For further information, please see the website <https://www.healthandcarelearning.wales/>

9.0 Health & Social Care Wales (continued)

9.2 Health & Social Care Wales – Complete list of qualifications

SUBJECT*	UNIT FEE	QUALIFICATION FEE
GCSE Health & Social Care, & Childcare – Single Award	£22.56	£45.12
GCSE Health & Social Care, & Childcare – Double Award	£22.56	£90.24
Level 2 Health & Social Care: Principles & Contexts	£30.00	£60.00
Level 3 Health & Social Care: Practice (Children & Young People) ¹	-	£147.00
Level 3 Health & Social Care: Practice (Adults) ¹	-	£147.00
Level 4 Professional Practice in Children’s Care, Play, Learning and Development ¹	-	£259.00
Level 5 Leadership & Management of Health & Social Care: Practice ¹	-	£954.00

*For further information, please see the website <https://www.healthandcarelearning.wales/>

¹Qualification entered through City & Guilds

9.0 Health & Social Care Wales (continued)

9.2 Health & Social Care Wales – Complete list of qualifications

SUBJECT*	UNIT FEE	QUALIFICATION FEE
Level 2 Children’s Care, Play, Learning & Development: Practice & Theory		
Supporting core practice in Children’s Care, PLD	£102.00	£131.00
Understanding Children’s Care, PLD	£29.00	
Other units	-	
Level 3 Children’s Care, Play, Learning & Development: Practice & Theory – current specification ¹		
Promoting core practice in CCPLD	£141.76	£216.00
Principles & theories that influence CCPLD in the 21 st century in Wales	£29.40	
Investigating current issues in CCPLD in Wales	£44.84	
Other units	-	
Level 3 Children’s Care, Play, Learning & Development: Practice & Theory – award from Summer 2025 ²		
Promoting core practice in CCPLD	£141.76	£273.00
Principles & theories that influence CCPLD in the 21 st century in Wales	£29.40	
Investigating current issues in CCPLD in Wales	£44.84	
Practical skills for work placement in early years (0-7 years) ³	£57.00	
Other units	-	

*For further information, please see the website <https://www.healthandcarelearning.wales/>

¹ Learners who started their course in September 2022 and are due to complete (certificate) prior to Summer 2025 must follow this specification.

² Learners who start their course in September 2023 and are due to complete (certificate) in Summer 2025 must follow this specification.

³ No entry in this unit permitted until Summer 2025.

9.0 Health & Social Care Wales (continued)

9.2 Health & Social Care Wales – Complete list of qualifications

SUBJECT*	UNIT FEE	QUALIFICATION FEE
Level 4 Preparing for Leadership & Management in Children's Care, Play, Learning & Development ¹	-	£175.00
Level 5 Leadership & Management of Children's Care, Play, Learning & Development: Practice ¹	-	£954.00
Level 2 Health & Social Care: Core (Children and Young People) ¹	-	£104.00
Level 2 Health & Social Care: Core (Adults) ¹	-	£104.00
Level 2 Health & Social Care: Core (Adults & Children and Young People) ¹	-	£122.00
Level 3 Certificate in Health & Social Care: Principles and Contexts		£91.00
Non-examination assessments - Unit 1,3	£22.75	
External examination assessment - Unit 2	£45.50	
Level 3 Foundation Diploma in Health & Social Care: Principles and Contexts		£136.50
Non-examination assessments - Unit 1,3,4,6	£22.75	
Non-examination assessment - Unit 5	£45.50	
External examination assessment - Unit 2	£45.50	

*For further information, please see the website <https://www.healthandcarelearning.wales/>

¹Qualification entered through City & Guilds

9.0 Health & Social Care Wales (continued)

9.2 Health & Social Care Wales – Complete list of qualifications

SUBJECT*	UNIT FEE	QUALIFICATION FEE
Level 3 Diploma in Health & Social Care: Principles and Contexts Non-examination assessments - Unit 1,3,4,6 Non-examination assessment - Unit 5 External examination assessment - Unit 2	£22.75 £45.50 £45.50	£182.00
Level 3 Extended Diploma in Health & Social Care: Principles and Contexts Non-examination assessments - Unit 1,3,4,6,8,9 Non-examination assessment - Unit 5 External examination assessment - Unit 2,7	£22.75 £45.50 £45.50	£273.00
Level 2 Health & Social Care: Practice (Adults) ¹	-	£104.00
Advanced Subsidiary GCE in Health & Social Care & Childcare	£29.82	£59.64
Advanced GCE in Health & Social Care & Childcare	£29.82	£119.28
Level 4 Preparing for Leadership & Management in Health & Social Care ¹	-	£259.00

*For further information, please see the website <https://www.healthandcarelearning.wales/>

¹Qualification entered through City & Guilds

9.0 Health & Social Care Wales (continued)

9.2 Health & Social Care Wales – Complete list of qualifications

SUBJECT*	UNIT FEE	QUALIFICATION FEE
Level 2 Children’s Care, Play, Learning & Development: Core ²	-	£104.00
Level 2 Children’s Care, Play, Learning & Development: Practice ¹	-	£104.00
Level 3 Children’s Care, Play, Learning & Development: Practice ¹	-	£147.00
Level 4 Professional Practice in Health and Social Care ¹	-	£259.00
Level 4 Independent Advocacy ¹	-	£370.00
Level 4 Adult Placement / Shared Lives ¹	-	£370.00
Level 4 Social Services Practitioner ¹	-	£370.00

*For further information, please see the website <https://www.healthandcarelearning.wales/>

¹Qualification entered through City & Guilds

²Resit fee for Level 2 Children’s Care, Play, Learning & Development: Core is £52.00