

WELSH BACCALAUREATE SKILLS CHALLENGE CERTIFICATE

National/Foundation

Community Challenge

National Deaf Children's Society

[vs1]



Available for assessment from January 2018

PURPOSE

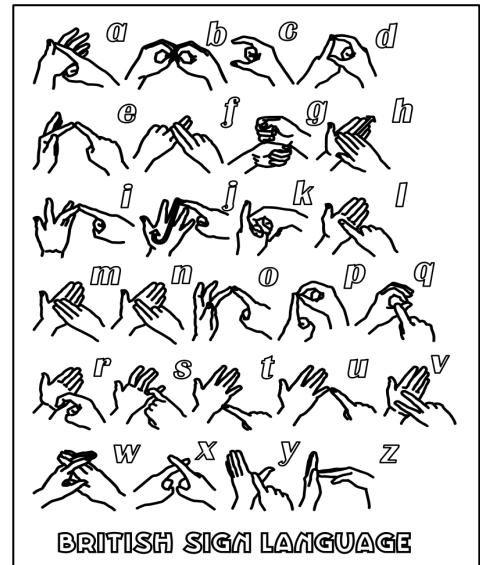
The purpose of the Community Challenge is to develop learners' skills, whilst encouraging learners to identify, develop and participate in opportunities that will benefit the community. During the Community Challenge learners will explicitly develop skills of **Planning and Organisation** and **Personal Effectiveness** and apply them in an appropriate manner.

BRIEF

There are around 250,000 British Sign Language (BSL) users in the UK. BSL is a language in its own right with its own grammatical structure and vocabulary. It was formally recognised as an official language in Wales in 2004. There are also many people who use Sign Supported English/Welsh (BSL signs alongside spoken English/Welsh[vs2]).

Deaf young people and sign users have often told National Deaf[vs3] Children's Society Cymru that they want more people to learn to sign so that they can feel more included. The fingerspelling alphabet forms a crucial part of communication for all sign language users and is a great introduction to sign language.

As an Individual or a member of a team (3-6 members) you are invited to make an important contribution to raising awareness of sign language and fingerspelling. You will need to fluently and competently learn the fingerspelling alphabet using online resources. You will plan and organise how you will spend **10 hours** leading activity sessions with younger pupils at your school or your local primary school to pass on the fingerspelling you have learned.



Coaching structure could be:

- Preparation for coaching sessions (2 hours maximum)
- Coaching sessions (8 hours)
- Feedback

Example of coaching activities:

- Preparation of worksheets and area of work
- Coaching sessions to include a variety of activities
- Provide feedback on how participants can improve and progress

You must keep a record of what, who where, when and how you have delivered this training. On completion of the activity you will evaluate your performance in leading this training and highlight areas for improvement.

RESOURCES

The National Deaf [Children's][vs4] Society Cymru provides videos to help you learn to fingerspell in either the English or Welsh alphabet: www.ndcs.org.uk/icanfingerspell

CONTACT DETAILS

NDCSWales@ndcs.org.uk

Call: 029 20373474 (telephone) or 029 2023 2739 (textphone)