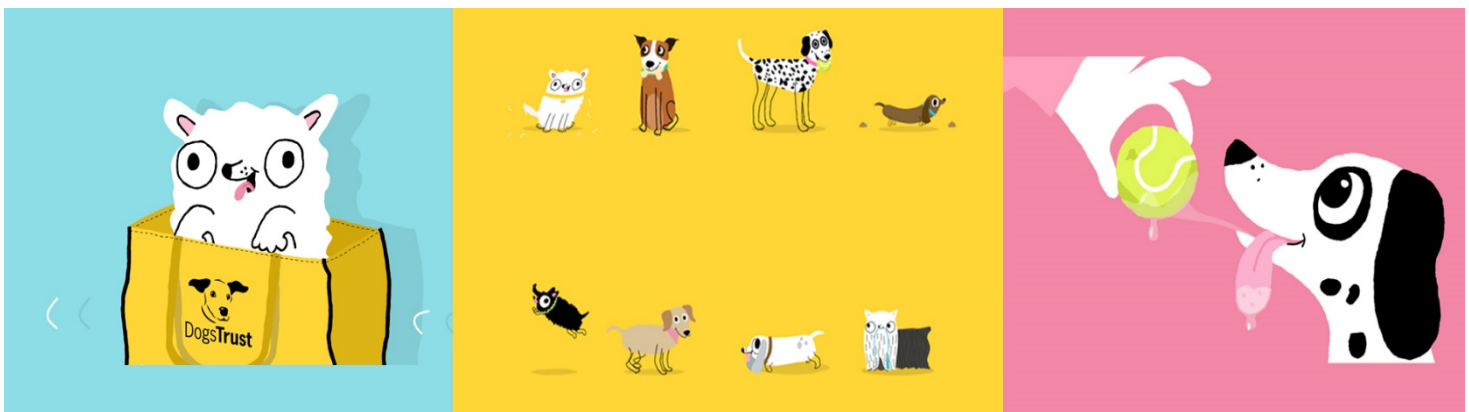


# WELSH BACCALAUREATE SKILLS CHALLENGE CERTIFICATE

National/Foundation

## Enterprise and Employability Challenge

Product for Dogs Trust



**Available for assessment from June 2018**

## PURPOSE

The purpose of the Enterprise and Employability Challenge is to develop learners' skills, whilst providing opportunities for learners to develop enterprising skills and attributes and enhance employability. During the Enterprise and Employability Challenge learners will explicitly develop skills in **Creativity and Innovation, Personal Effectiveness** and **Digital Literacy** and apply them in an appropriate manner.

## BRIEF

During your working life it will be unusual for you to have just one job; it is more likely you will have a number of different jobs. You will have to apply for these jobs and go through an assessment process which may include an interview and presentation. It is important you are able to sell yourself by using examples of the skills you have and how you have used them. Team work, a can-do and positive attitude and being creative are particularly valued by employers.

**Dogs Trust** is the UK's largest dog welfare charity and in 2017, cared for over 15,000 dogs across its centres. The average length of stay in kennels for each dog was 41 days and centre staff work hard to make sure that this stay is as comfortable and happy as possible. Part of this job role is ensuring that our dogs are kept occupied so they don't get bored and so they stay physically and mentally healthy. Centre staff and volunteers provide walks for our dogs each day and there are a variety of different facilities across our centres such as agility courses and even a water feature for dogs to play in.



Dogs need a lot of mental stimulation as well as physical exercise; they like to use their natural instincts which can include digging, sniffing, foraging and chewing. Getting them thinking and using their brains can really tire them out, even more than their walks do!

Not having access to appropriate activities can lead to dogs doing things that owners don't like, such as chewing up items in the house, barking and digging up the garden. Sometimes, these behaviours can lead to owners giving their dog up to rescue as they feel they can't cope.

**Dogs Trust** is dedicated to educating people, helping them to better understand their dogs and improve their lives. One message that we work hard to get across to people is that as well as having other needs met, dogs need enriching activities.

Enrichment is *making* something more meaningful, substantial or rewarding and that's what we want to do for the lives of all dogs. Imagine if you had to sit at home for hours doing absolutely nothing.....well it's the same for dogs!

All dogs are individual, and therefore the product you design should be appropriate in terms of size, durability, level of difficulty and so on. There are lots of factors to think about!

To help you experience business and the world of work you should work together with others in a team of 3-6 members, using skills and knowledge you gain, to **design and develop** an innovative **product that will provide enrichment to dogs**. The product must be cost-effective, commercial and suitable for sale in our Rehoming Centres & Charity Shops. It should also be suitable for the dogs in our kennels, awaiting their new homes.

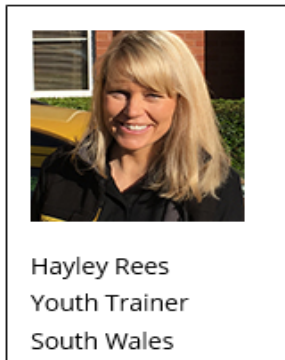
The Enterprise and Employability Challenge provides you with an opportunity for you to show how creative and innovative you can be including the use of digital technology, as well as demonstrating people skills such as developing a rapport, listening skills, negotiating skills and trusting others. You may also demonstrate your assertiveness and leadership qualities.

## RESOURCES

[www.dogstrust.org.uk](http://www.dogstrust.org.uk)

Our website will help you further with this research, or you could invite your local Youth Trainer to deliver a workshop to the group about the needs of dogs. This will give you the opportunity to learn about the importance of enrichment for dogs and to pose any questions you may have. Why not pitch your final ideas to your Youth Trainer too? You have a great opportunity to learn more about dogs whilst developing your entrepreneurial skills.

## CONTACTS



**Book a Workshop Now**

**[Hayley.rees@dogstrust.org.uk](mailto:Hayley.rees@dogstrust.org.uk)**

**073928693778**